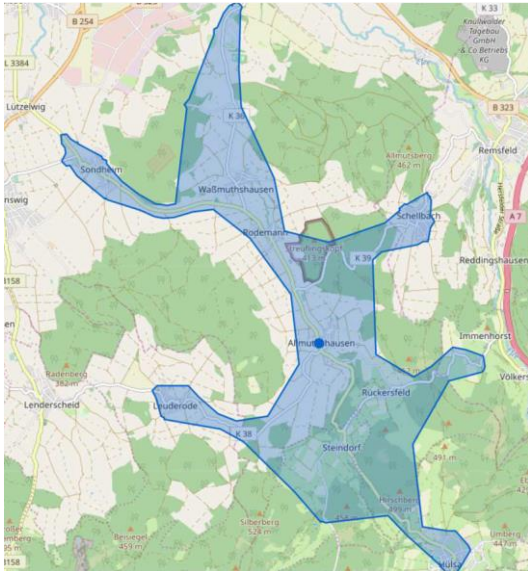
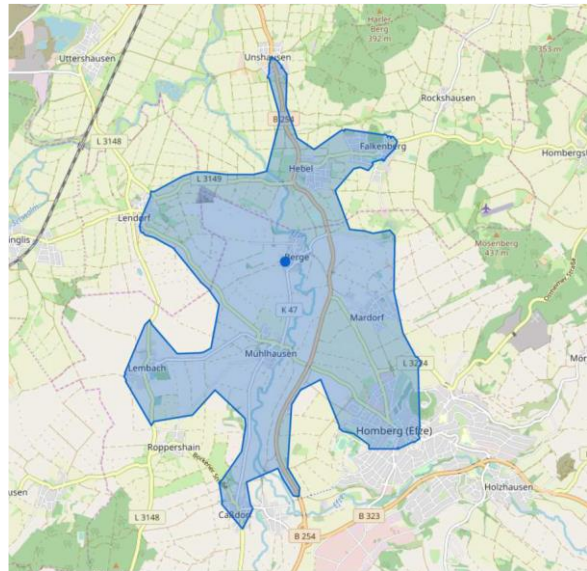


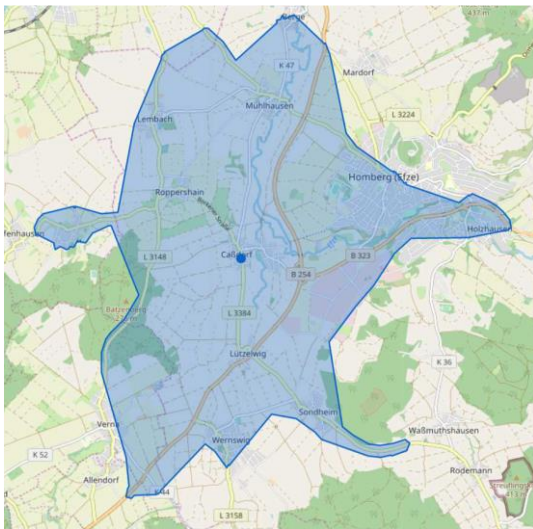
Anlage 6



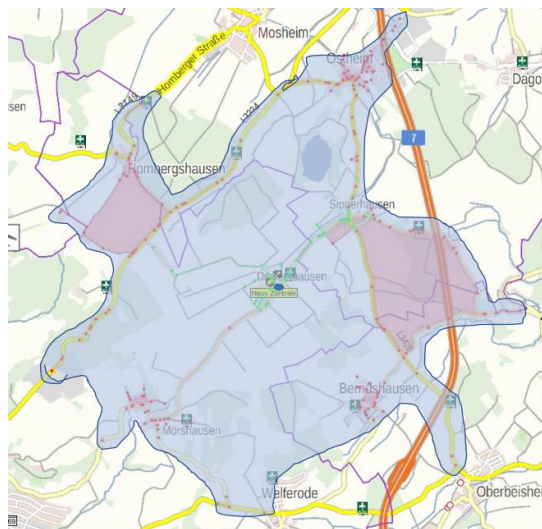
Allmuthshausen



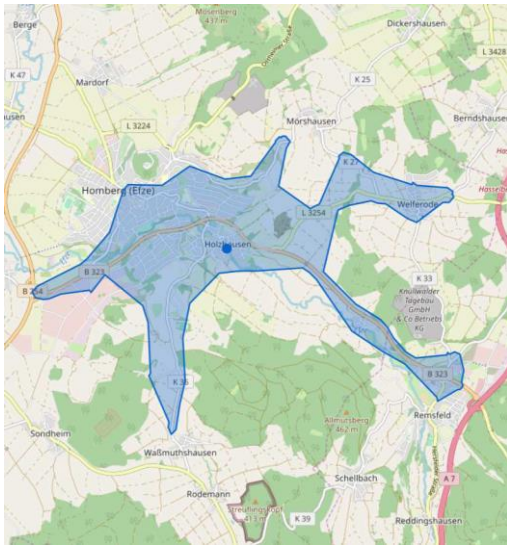
Berge



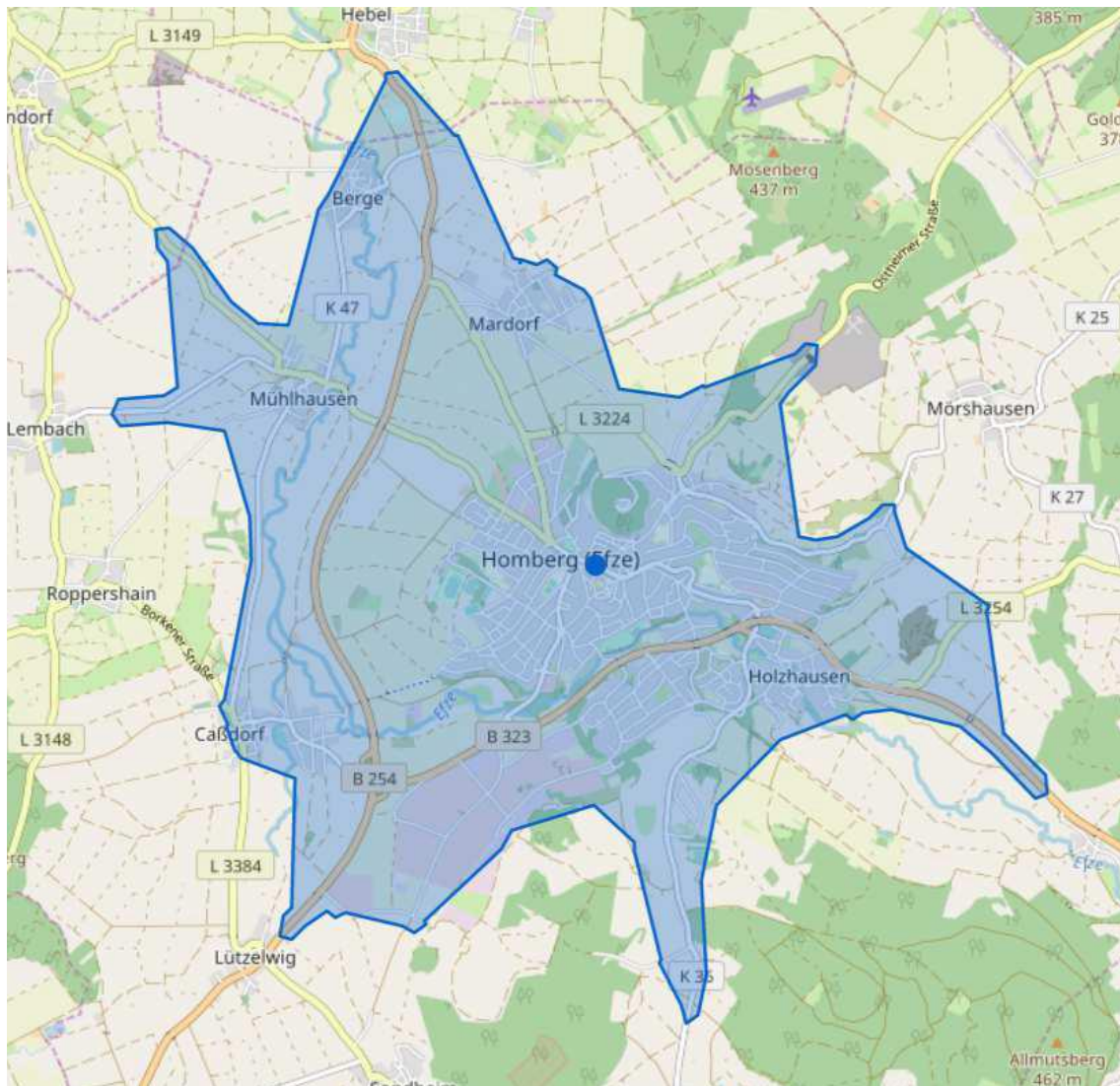
Caßdorf



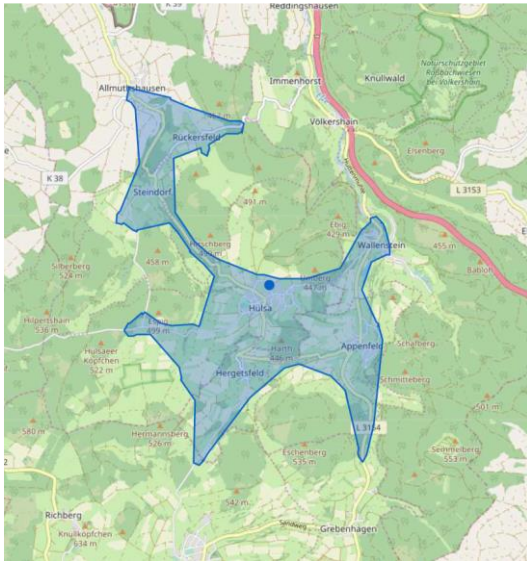
Dickershausen



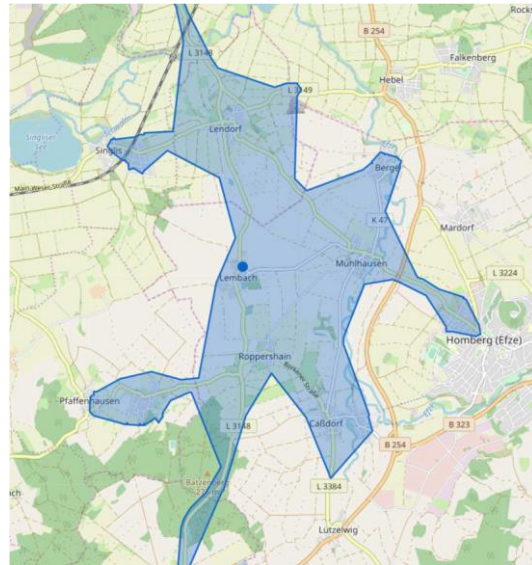
Holzhausen



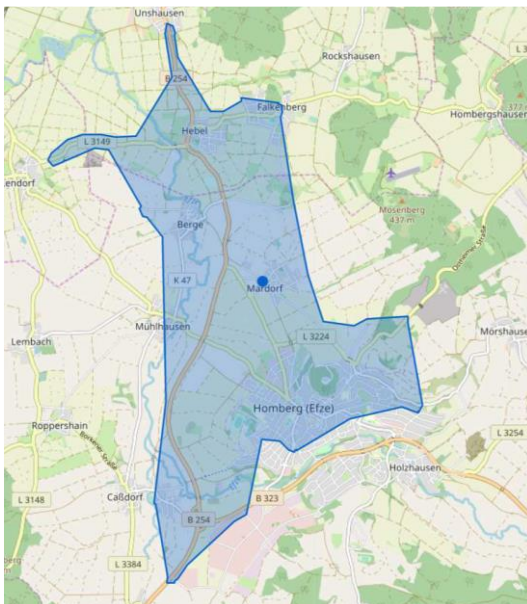
Homberg – Kernstadt



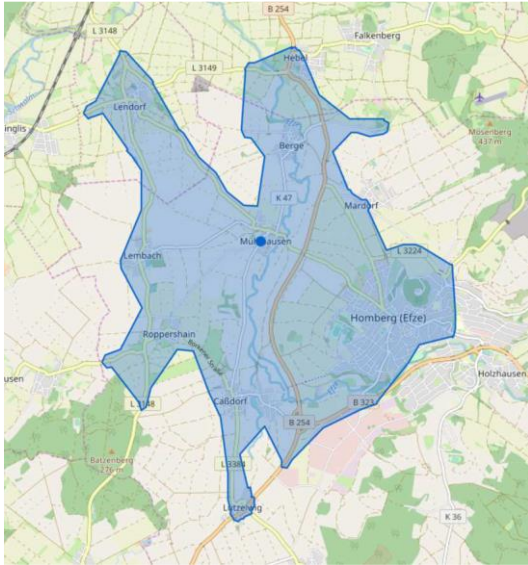
Hülfa



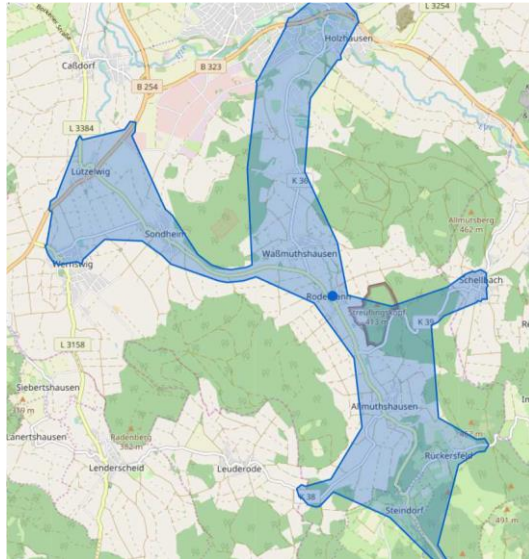
Lembach



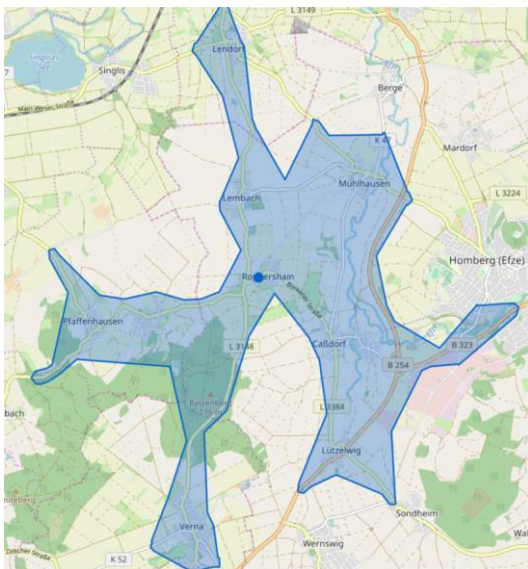
Mardorf



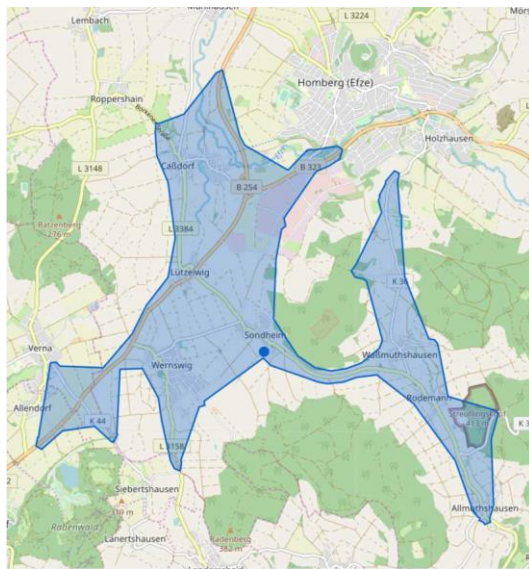
Mühlhausen



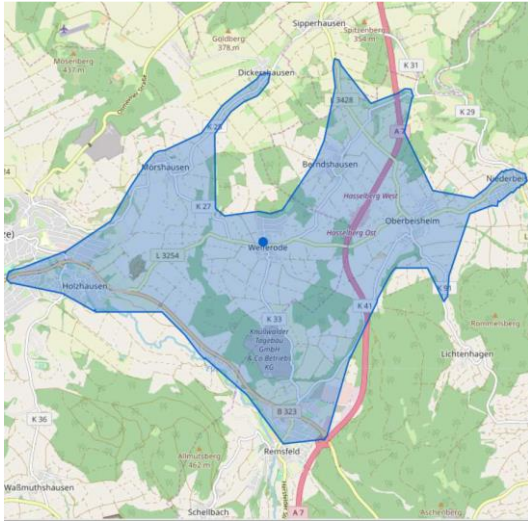
Rodemann



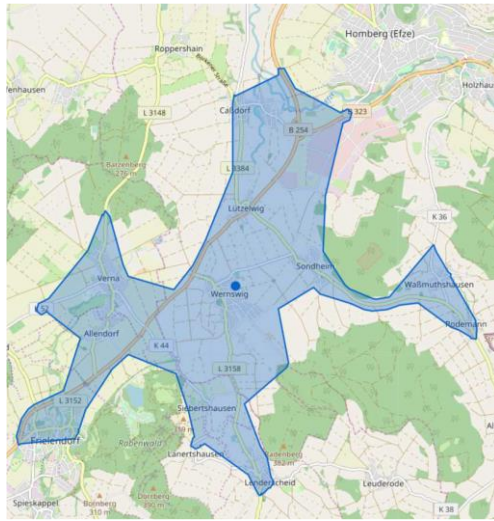
Roppershain



Sondheim



Welferode



Wernswig

Grundlage: Ausrückzeit $t_{Aus} = 5$ Minuten