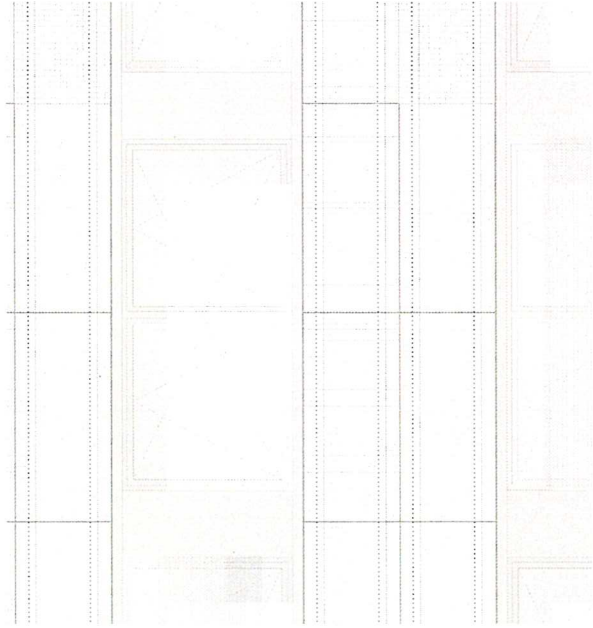
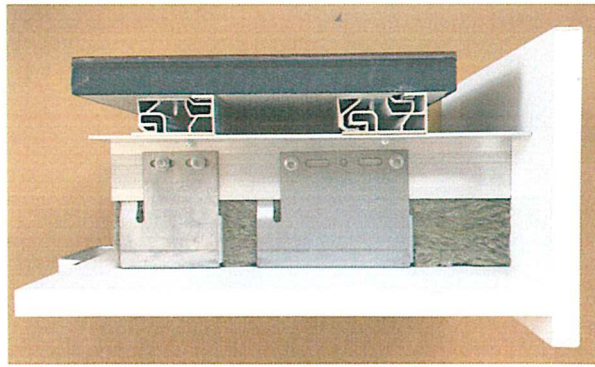
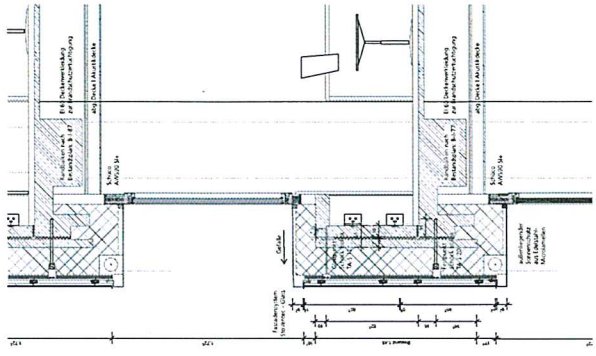


FASSADE BT A UND BT B

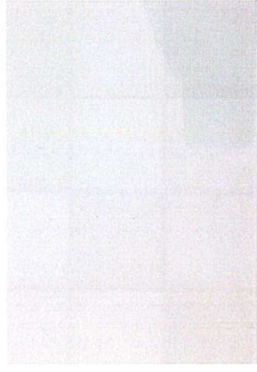
DETAILAUSSCHNITT FASSADE BT B



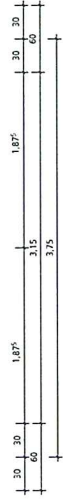
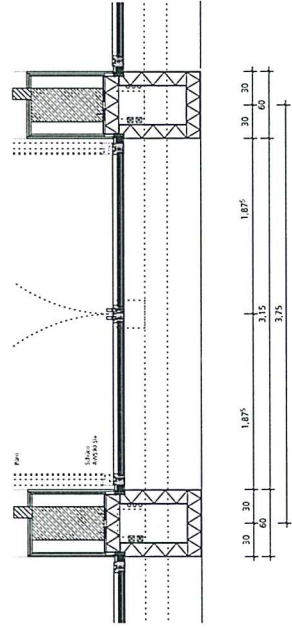
Horizontalschnitt



Vertikalschnitt



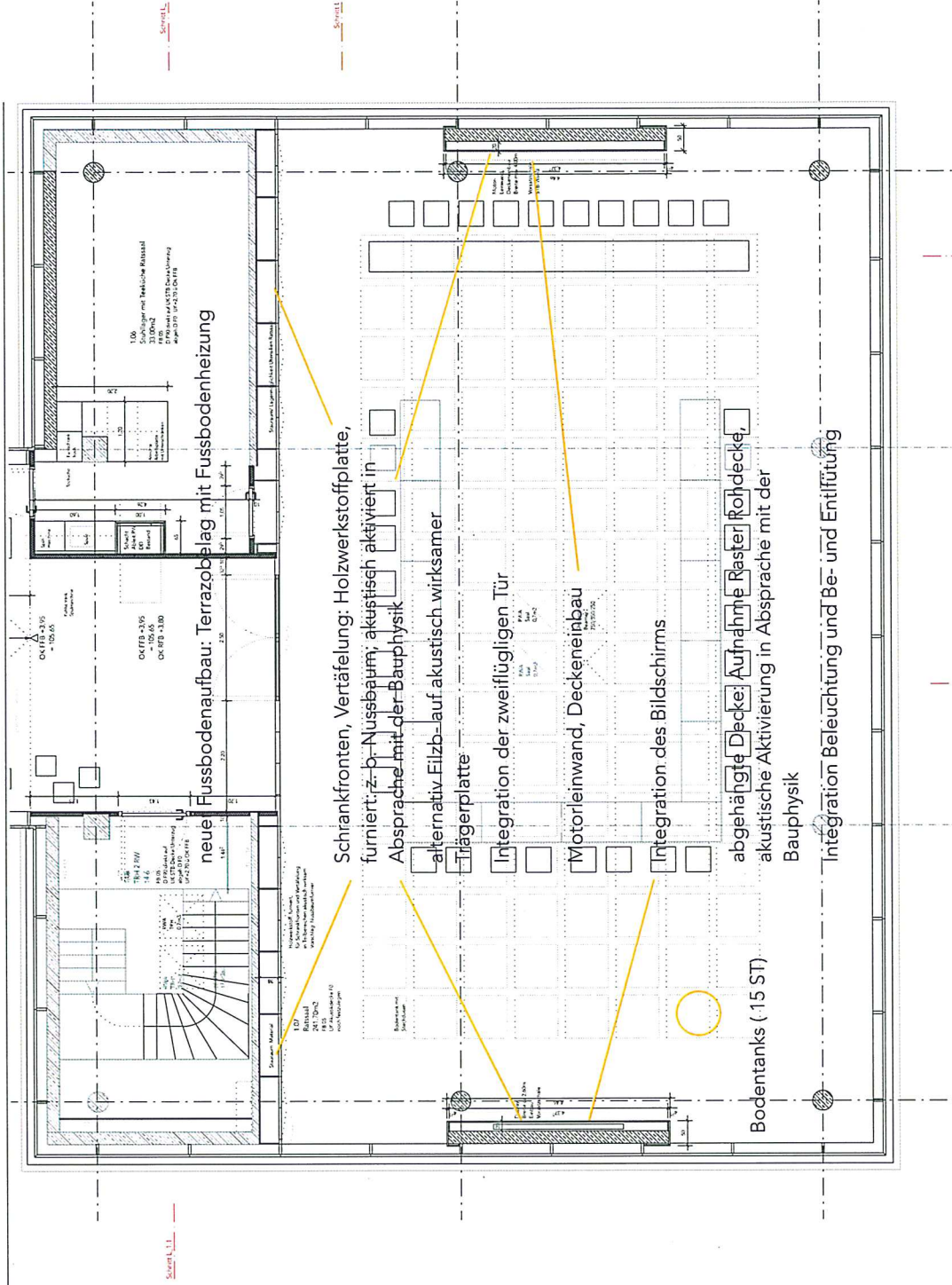
Teilansicht



21

RATSSAAL

GRUNDRISS



Maßnahmen Ausbau

RATSSAAL

REFERENZ VERTÄFELUNG -
SCHRANKFRONTEN



Nussbaumfurnier

RATSSAAL

REFERENZ

INTEGRATION BILDSCHIRM



RATSSAAL

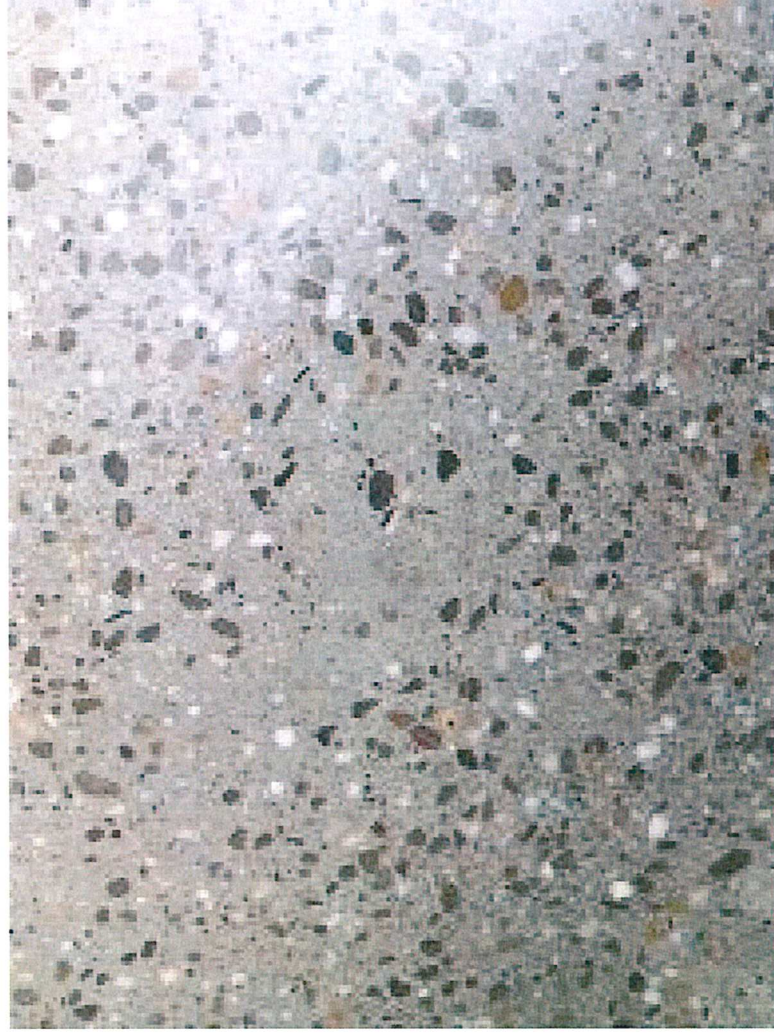
REFERENZ

INTEGRATION BILDSCHIRM



RATSSAAL

REFERENZ TERRAZZO

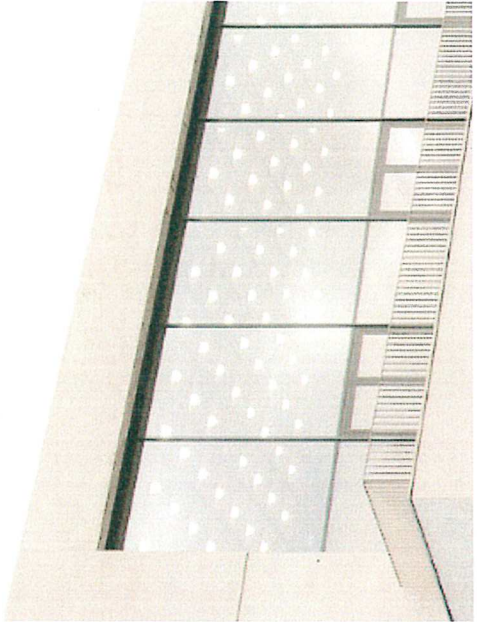


RATSSAAL

REFERENZ ABGEHÄNGTE DECKE

AKUSTIK - BELEUCHTUNG -

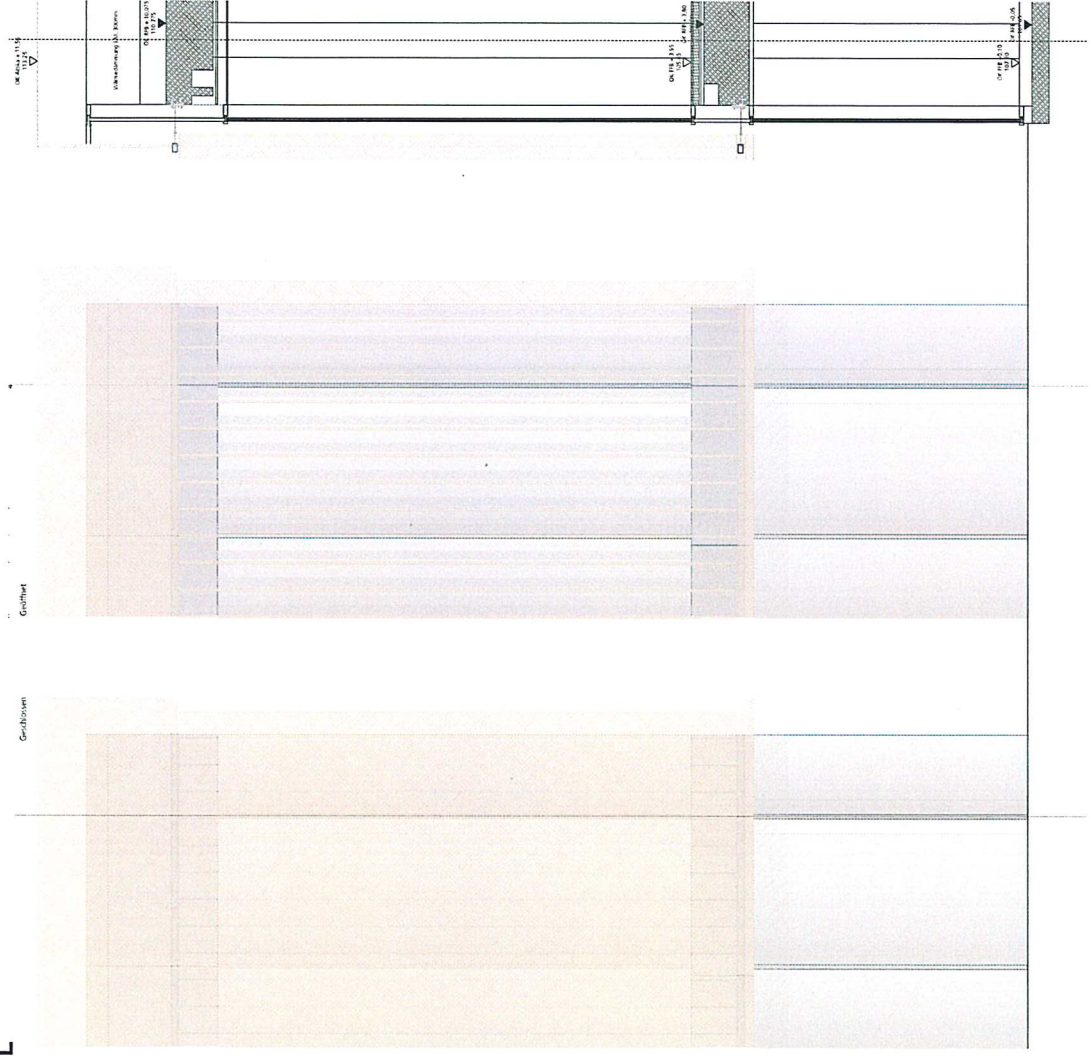
BE- UND ENTLÜFTUNG



27

FASSADE - SONNENSCHUTZ RATSSAAL

VARIANTE LAMELLE - PERFORIERT - STRECKMETALL





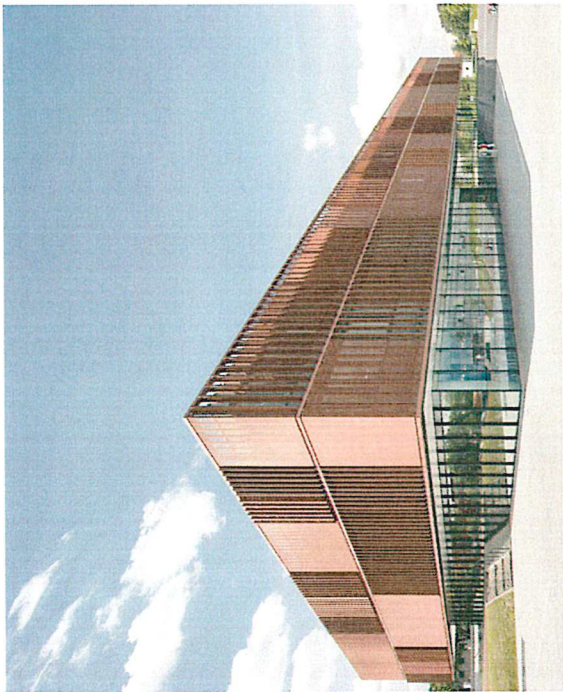






RATSSAAL

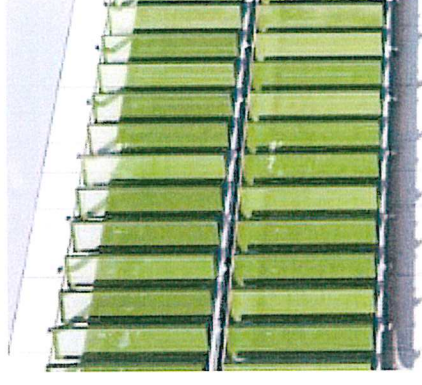
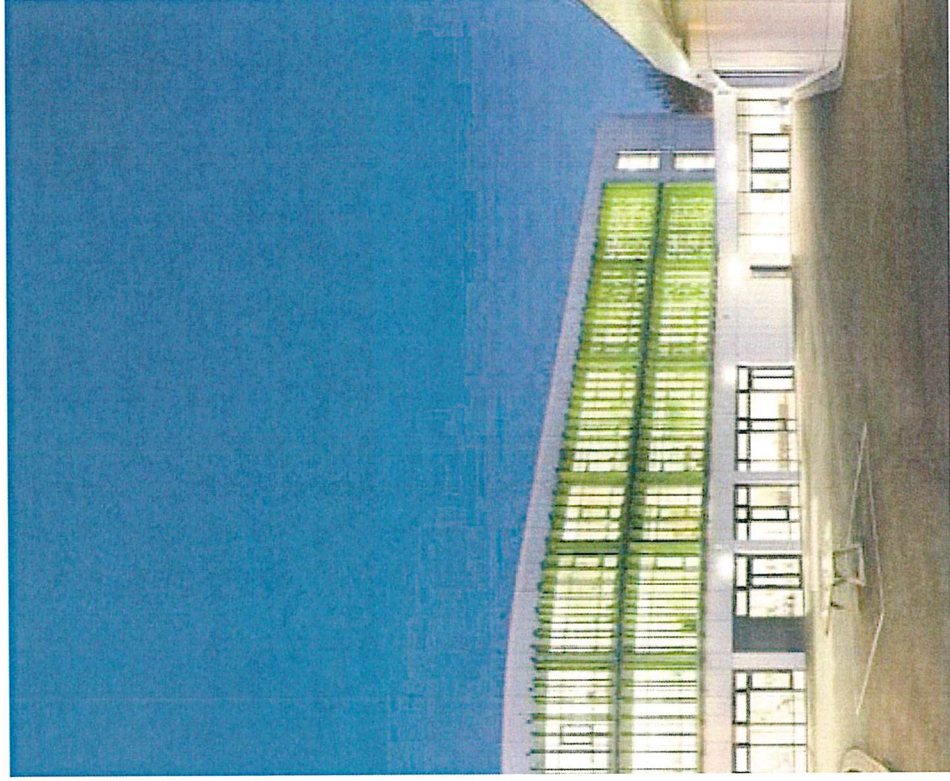
REFERENZ SONNENSCHUTZ



Verwaltungsgebäude EON
Salzgitter

RATSSAAL

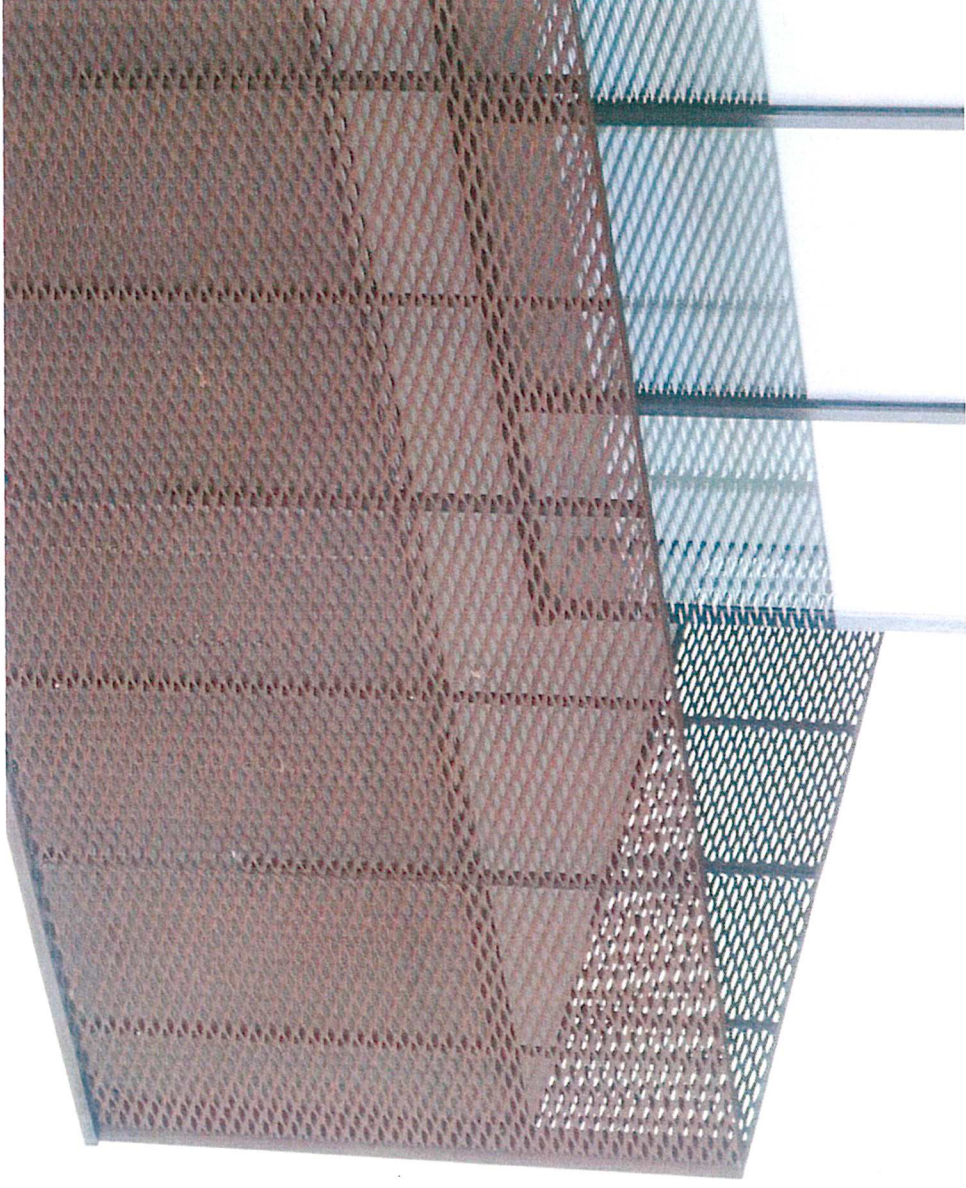
REFERENZ SONNENSCHUTZ



Erich-Kästner-Schule Leipzig
Grundschole im Passivhausstandard

RATSSAAL

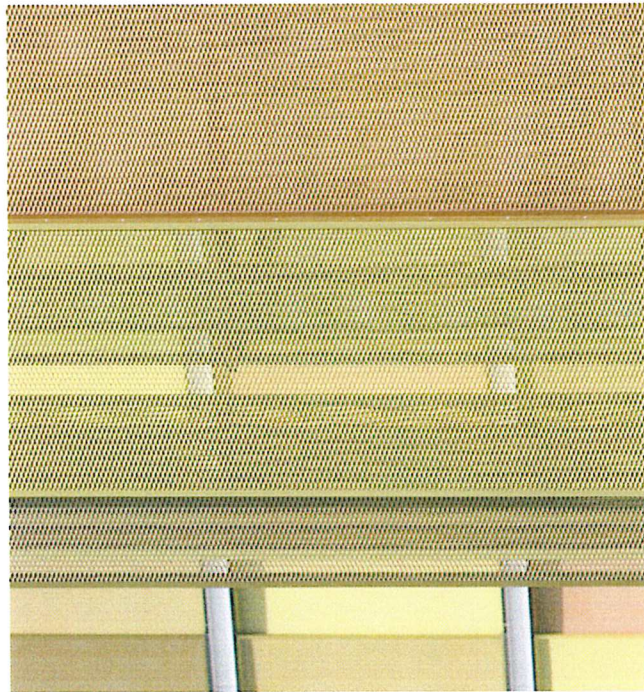
REFERENZ SONNENSCHUTZ



Campus Sporthalle
Ringsted/ Dänemark

RATSSAAL

REFERENZ SONNENSCHUTZ



Rems-Murr-Klinikum
Winnenden



RATSSAAL

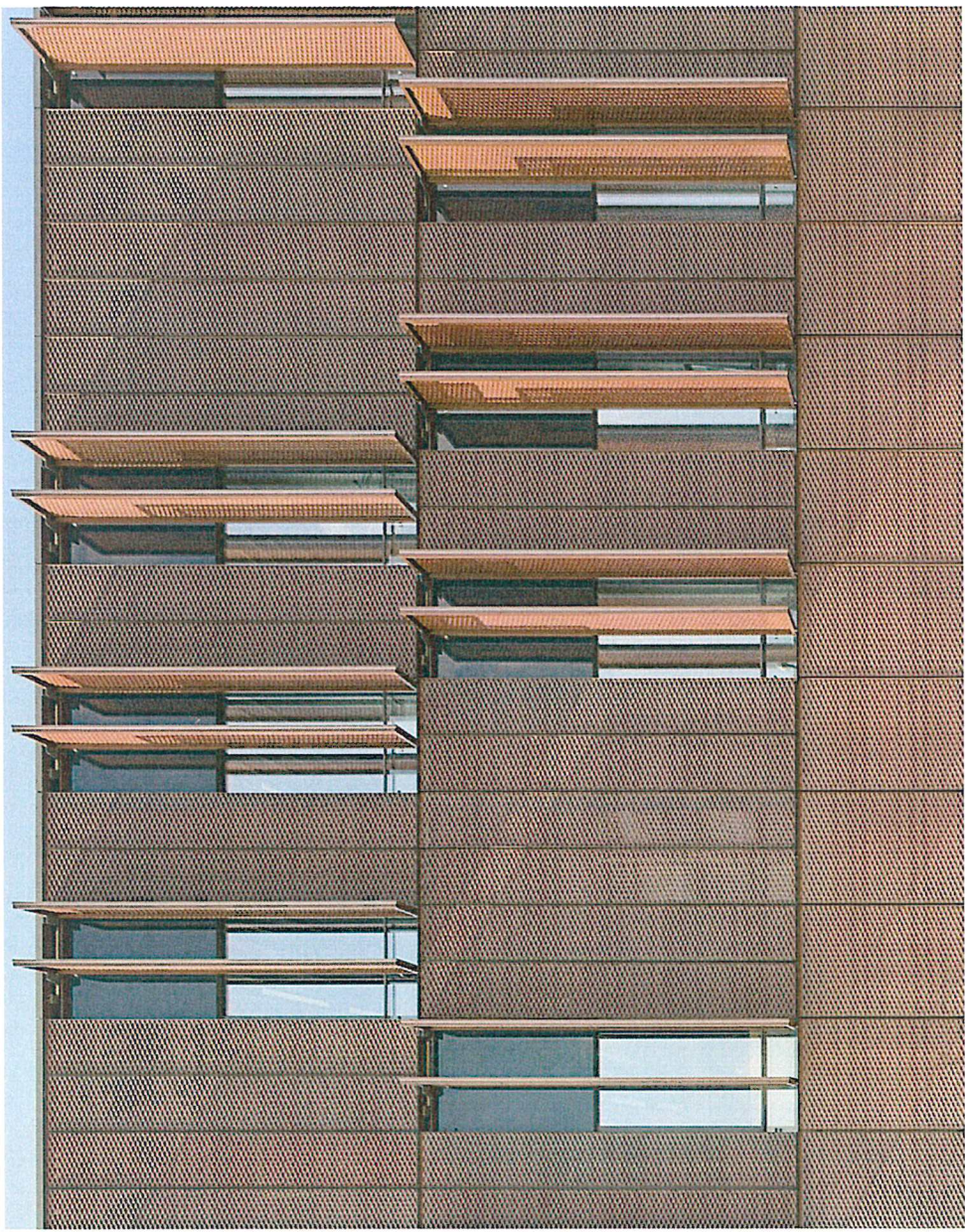
REFERENZ SONNENSCHUTZ



Justizentrum
Eisenstadt

RATSSAAL

REFERENZ SONNENSCHUTZ



Hochschule Ruhr West
Bottrop